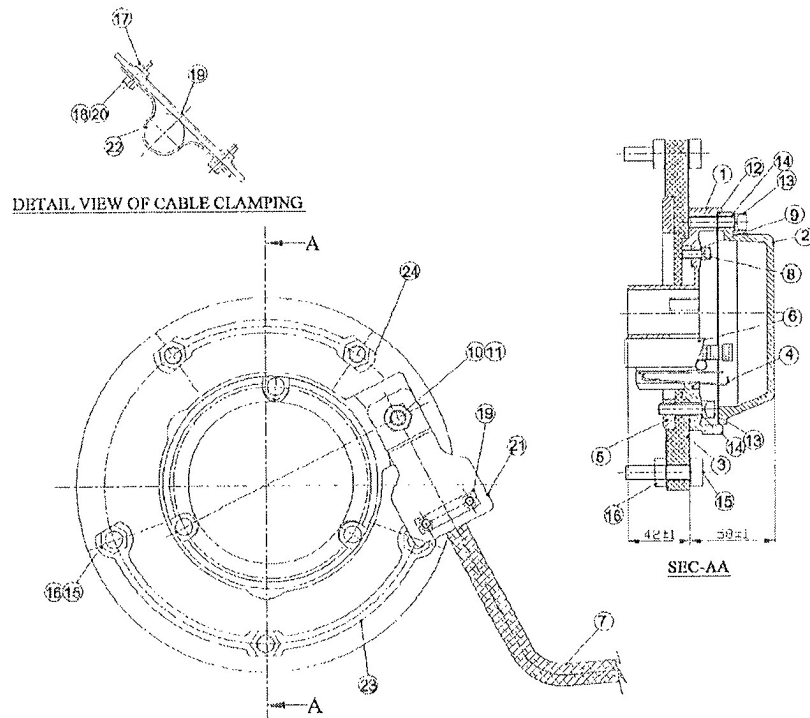


24	1	909-81143	WASHER, LOCKING
23	1	909-81142	WASHER, LOCKING
22	1	909-81023	CLAMP
21	1	909-81144	SUPPORT WIRE
20	2	RFW0920512	SPRING WASHER-B5 TO IS:3063 (TAB-1)-1994, MATL: AISI 304
19	1	909-81145	WASHER, LOCKING
18	2	RFS5160516	HEX. HEAD SCREW- M5x16 TO IS:1364(PART 1)-02 MATL:IS:1367(P.14),GRADE A2-70
17	2	RFN3860547	HEX. HEAD NUT- M5 TO IS:1364(PART 3)-02 MATL:IS:1367(P.14),GRADE A2-70
16	5	RFN3861084	HEX. HEAD NUT- M10 TO IS:1364(PART 3)-02 MATL:IS:1367(P.14),GRADE A2-70
15	5	RFS5160545	HEX. HEAD SCREW- M5x45 TO IS:1364(PART 1)-02 MATL:IS:1367(P.14),GRADE A2-70
14	6	RFN3860868	SPRING WASHER- B8 TO IS:3063-94, MATL:AISI 304
13	6	RFS5160830	HEX. HEAD SCREW- M8x30 TO IS:1364(PART 2)-02 MATL:IS:1367(P.14),GRADE A2-70
12	1	909-81171	GASKET
11	1	RFS5161030	HEX. HEAD. SCREW-M10x30 TO IS:1364(PART 2)-02 MATL:IS:1367(P.14),GRADE A2-70
10	1	RFW0921022	SPRING WASHER-B10 TO IS:3063-94, MATL:AISI 304
9	3	RFW0920820	SPRING WASHER-B8 TO IS:3063 (TAB-1)-1994, MATL: AISI 304
8	3	RFS5160615	HEX. HEAD SCREW- M6x15L TO IS:1364(PART 2)-02 MATL:IS:1367(P.14),GRADE A2-70
7	1	909-81172	E-BEAM CURRENT RETURN CABLE COMPLETE
6	3	909-81030	CARBON BRUSH
5	1	909-81170	BRACKET
4	3	909-81169	ROLL SPRING COMPLETE
3	1	909-81168	MOUNTING FLANGE
2	1	909-81167	COVER
1	1	909-81166	BRUSH HOLDER

NOTE:
1. FIRM MUST GET THE APPROVAL OF THE PART DRAWINGS BEFORE REGULAR PRODUCTION.



GRADE No.	N12	N11	N10	N9	N8	N7	N6	N5	N4	N3	N2	N1
VALUE	50	25	12.5	6.3	3.2	1.6	0.8	0.4	0.2	0.1	0.05	0.025
SYMBOL	~	△			▽			▽		▽	▽	▽